

AM Machinery inspection certificate

Kemper 345

#21185



Price on request



AMMACHINERY

AMMACHINERY

Industriestraat 23
5961 PH Horst
The Netherlands
T + 31 (0)77 - 2066603
sales@ammachinery.nl
<https://www.ammachinery.nl/>



Dear sir/madame,

Thank you for your interest in our **Kemper 345** built in **2009**, with our internal stock number **21185**. We are a dedicated SPFH specialist, we work professional and transparent, all our equipment is cleaned and run through our 300 points inspection report. Use this link to get below information:

<https://www.ammachinery.nl/kemper-345-21185.html>

Technical specifications

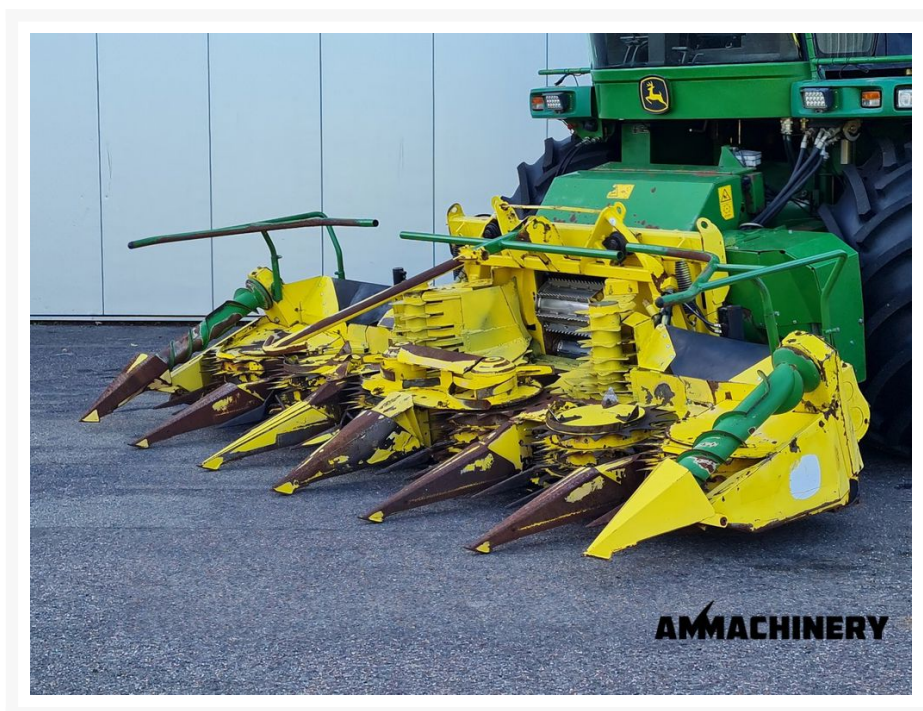
Partnumber	21185	Brand	Kemper
Model	345	Year of manufacture	2009
Series	JD		

Options

2) Short Description

2009 Kemper 345 Corn Header, fits John Deere. 6 rows, 4.5 meter working width. With header lateral tilt. This header has been tested and inspected. The inspection report can be downloaded from our website. For more information please send us a message.

3) Product Images





4) Inspection Report

Condition
Header

Stocknumber	21185	Brand	Kemper
Model	345	Amount of rows	6
Working width	4,50 meter	Autosteer sensor	N.A.
Header lateral tilt	V	Header height control sensors	N.A.
Header speed gearbox shifting	V	Cutting knives	★★★★☆
Drum bearings	X*	Cleaners	V
Drums	V	Drum cleaners / scrapers	V
Knife discs	V	Drive shaft	V
Drive line couplers	V	Drive chains and belts	X*
Crop dividers	V	Oil levels	X*
Down corn augers	V	Ground skid plates	V
Fold cilinders	V	Hydraulic hoses/lines	V
Transport accident prevention	N.A.	Support wheel(s)	N.A.
Support legs	V	Feeder auger	N.A.
Feeder auger bearings	N.A.	Wearplates	V

5) Recommended Repairs

Belt replacement crop divider kemper 300 LH side
 Belt replacement crop divider kemper 300 RH side
 Drum and knife disc bearing replacement Kemper 300 3e left
 Kemper 300 drum+knife bearing replacement 3e left
 Kemper 300 main gearbox LH seal replacement clutchside
 Kemper 300/400 1e gearbox knifedisc oil leakage top and rear repair
 Kemper 300/400 2e gearbox knifedisc oil leakage top and rear repair
 Kemper 300/400 3e gearbox knifedisc oil leakage top and rear repair
 Kemper 300/400 4e gearbox knifedisc oil leakage top and rear repair
 Kemper 300/400 5e gearbox knifedisc oil leakage top and rear repair
 Kemper 300/400 6e gearbox knifedisc oil leakage top and rear repair