

AM Machinery inspection certificate

New Holland FR780

#23081



Price on request

AMMACHINERY PREMIUM PACKAGE



SOLD WITH WARRANTY

30 engine hours / 150 days on
CROP-FLOW components



AM INSPECTION CERTIFICATE

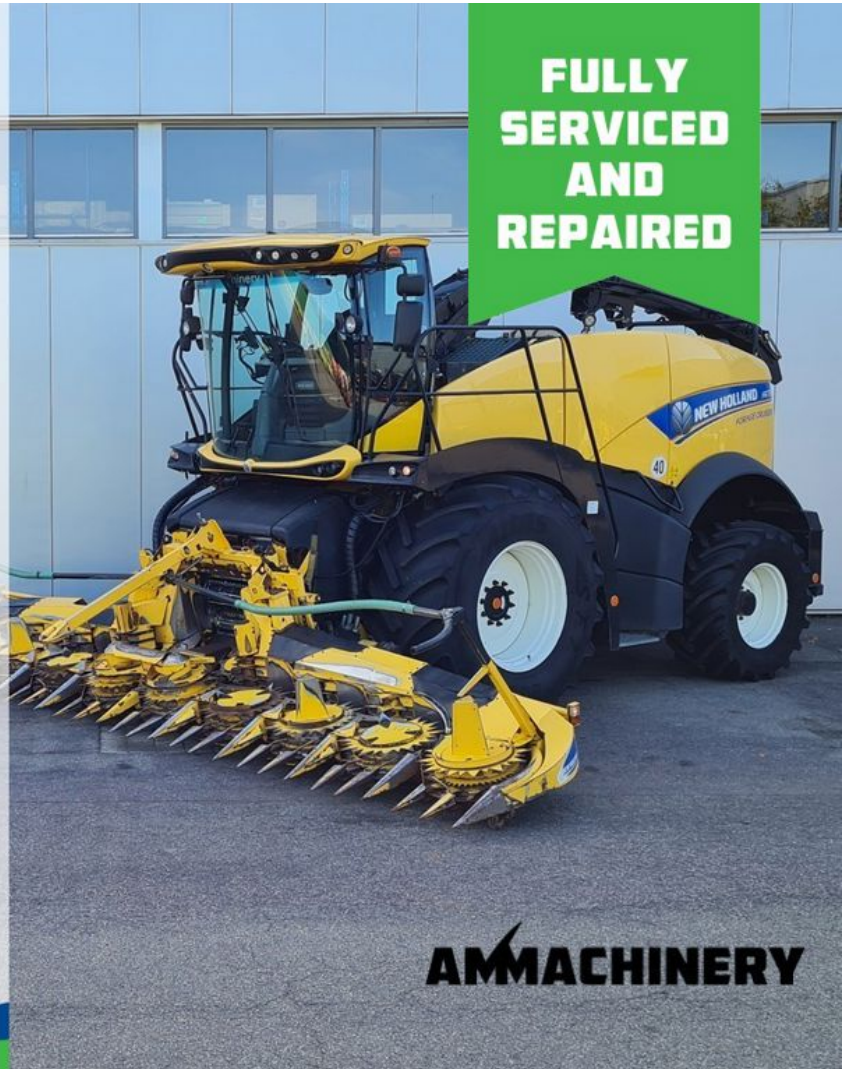
300 point inspection
Specs & options check
Functional test



AM AFTER SALES

Financing
All-risk shipment insurance

**FULLY
SERVICED
AND
REPAIRED**



AMMACHINERY

Industriestraat 23
5961 PH Horst
The Netherlands
T + 31 (0)77 - 2066603
sales@ammachinery.nl
<https://www.ammachinery.nl/>



Dear sir/madame,

Thank you for your interest in our **New Holland FR780** built in **2015** ,with our internal stock number **23081**.We are a dedicated SPFH specialist, we work professional and transparent, all our equipment is cleaned and run trough our 300 points inspection report. Use this link to get below information:
<https://www.ammachinery.nl/new-holland-fr780-23081.html>

Technical specifications

Partnumber	23081	Brand	New Holland
Model	FR780	Year of manufacture	2015
Engine hours	3743	Road speed (km/h)	40
Drum hours	2422	Attr 2 or 4 wheel drive	4 WD
Engine Brand	FPT	Engine type	L6
Engine Power HP	764	Engine Power (KW)	550
Front Tires Brand	Mitas	Rear Tires Brand	Michelin
Front Tires Size	800/70R38	Rear Tires Size	600/65R28
Front Tires profile	72	Rear Tires Profile	55
Emission Level	Tier 4 (Adblue)		
Type knife drum	Standard		
Knife drum	40		
Amount of knives installed	20		
Kernel processor type	Saw tooth		

Options

Auto lubrication	Yes	Automatic spout rotation	Yes
Autofill	Yes	Spout camera	Yes
Rear view camera	Yes	Rear weights	Yes
Trailer hitch	Yes	Yield mapping	Yes
Moisture mapping	Yes	NIR sensor	Yes
NIR sensor cabling	Yes	Innoculant factory installed	Yes
Climate control	Yes	Electrical adjustable mirrors	Yes
Electrical heated mirrors	Yes	Side window wipers	Yes
Rear window wiper	Yes	Electrical KP-gap adjustment	Yes
Partly duraline wear kit	Yes	Air compressor	Yes
LED lights	Yes	Sunblinds window(s)	Yes
Prepared for Direct Disc	Yes		

2) Short Description

Fully serviced 2015 New Holland FR780 4WD including corn header. 3743 Engine Hours, 2422 Drum Hours. 40 knife drums, 20 corn knives installed. With kernel processor (corn cracker), automatic lubrication, spout camera, Moisture sensor. This machine has been serviced and repaired based on our 300 point inspection. In addition, we provide a warranty on all our machines. For more information please send us a message.

3) Product Images



AMMACHINERY
PREMIUM PACKAGE

-  **SOLD WITH WARRANTY**
30 engine hours / 150 days on CROP-FLOW components
-  **AM INSPECTION CERTIFICATE**
300 point inspection
Specs & options check
Functional test
-  **AM AFTER SALES**
Financing
All-risk shipment insurance

FULLY SERVICED AND REPAIRED

AMMACHINERY





4) Inspection Report

Levels

Anti-freeze level in °C	- 45 °C	Cooling liquid level	V
Engine oil level	V	Hydraulic oil level	V
Left hand front end drive oil level	V	Rear axle oil level	V
Left hand rear end drive oil level	V	Right hand rear end drive oil level	V
Upper feedrolls gearbox oil level	V	Gearbox oil level	V
4WD gearbox oil level	V	Main gearbox pump drive	V
Brake fluid	V		

Condition

Knife drum

Type knife drum	Standard	Knife drum	40
Amount of knives installed	20	Knife condition	70%
Knife drum configuration	Corn	Shearbar front surface	★★★★★
Shearbar rear surface	★★★★★	Shearbar active position	Rear
Left hand Knife drum bearing	V	Right hand Knife drum bearing	V
Knife drum bottom plate	★★★★☆☆	Knife drum rear plate	★★★★☆☆
Knife drum front cover	★★★★☆☆	Knife drum stone cover	★★★★☆☆
Sharpening stone	★★★★☆☆	Left hand lift cilinder	V
Right hand lift cilinder	V		

Kernel processor

Gras chute liner	★★★★☆☆	Kernel processor rolls	★★★★★
Kernel processor type	Saw tooth	Kernel processor front roller left hand bearing	V
Kernel processor front roller right hand bearing	V	Kernel processor rear roller left hand bearing	V
Kernel processor rear roller right hand bearing	V	Kernel processor drive belt	★★★★★
Kernel processor drive tensioner bearings	V	Kernel processor drive idler roller	V
Kernel processor housing	★★★★☆☆	Tensioner springs gap adjustment	V

Feedrolls

Upper front feedroll	★★★★☆	Upper front feedroll wear strips	★★★★☆
Upper rear feedroll	★★★★☆	Metal detector roll	★★★★☆
Metal detector roll wear strips	★★★★★	Smooth roll	★★★★☆
Smooth roll scraper	★★★★☆	Upper front feedroller left hand bearing	V
Upper rear feedroller left hand bearing	V	Upper rear feedroller right hand bearing	V
Metal detector roll left hand bearing	V	Metal detector roll right hand bearing	V
Smooth roll left hand bearing	V	Smooth roll right hand bearing	V
Upper feedroller arm bushing	V	Feeder housing wear plates	★★★★☆
Upper feedrolls drive shaft	V	Upper feedrolls tension springs	V
Upper feedrolls arm bump stops	V	Upper feedrolls gearbox	V

Corn cave

Corn cave liner	★★★★☆	Corn cave side liners	★★★★★
Corn cave top liner	★★★★☆		

Blower

Blower paddles	83%	Blower liner	★★★★☆
Blower housing	V	Left hand blower bearing	V
Right hand blower bearing	V		

Transition housing

Transition housing	★★★★☆	Transition liners	★★★★☆
--------------------	-------	-------------------	-------

Spout

Spout turnable wear shims



Spout swivel tube



Spout complete housing



Spout front liner



Spout rear liner



Spout side liners



Inner Spout deflector



Outer Spout deflector



Engine

Dry engine

V

Waterpump bearings

V

Engine belting

V

Engine belt tensioners

V

Exhaust system

V

Engine mounting

V

Airfilters

V

Rotary air screen

V

Rotary air screen rollers

V

Cleaner cooling package

V

Engine belting idler roller

V

Operational Test

Main drive

Main clutch



Main drive belt



Main belt tensioner bearings

V

Drive train

Front drive shaft's and coupler's

V

Tires condition

V

Rear axle drive shaft

V

Rear axle stub axle

V

Rear axle ball joint

V

Steering cylinders

V

Operators station

Front window	V	Rear window	V
Cab door	V	Cab door latch	V
Cab right hand window	V	Cab roof	V
Cab front bottom cover	V	Mirrors	V
Joystick	V	Armrest control panel	V
Steering wheel adjustment	V	Front window wiper	V
Rear window wiper blade	V	Side window wipers blade	V
Cab air filter	V	Seat	V

Machine body

Front cover	V	Left hand cover	V
Right hand cover	V	Rear cover	V

Electrical

Head lights	V	Brake lights	V
Turn signal/hazard lights	V	Rotary beacon	V
Dome lights	V	Cab upper front work lights	V
Cab side work lights	V	Fender work lights	V
Upper rear work lights	N.A.	Lower rear work lights	V
Spout work lights	V	Fuel gauge	V

Functional test

Engine oil pressure low idle cold	5.70	Engine oil pressure high idle cold	6.00
Engine oil pressure low idle operating temperature	4.55	Engine oil pressure high idle operating temperature	6.00
Hydrostatic drive neutral	V	Transmission shifting	V
4WD working (if applicable)	V	Foot brakes L/R	V
Parking brake	V	Main clutch working	V
Autolube	V	Length of Cutt adjustment	V
Header speed adjustment	V	Header height control	V
Header Lateral Tilt (if applicable)	V	Front hydraulics	V
Dump valve (high flow hydraulics)	N.A.	Spout turning	V
Metal detector	V	Spout deflector	V
Sharping system	V	Shearbar adjustment	V
Cutterhead reverser	V	Kernel processor gap adjustment	V
Airconditioning cold	V	Electrical functions cabin	V
Camera(s)	V	Radio	V
Road & Working Lights	V	Free of error codes	V

Header

Stocknumber	23082	Brand	New Holland
Model	375SFI	Amount of rows	10
Working width	7.5 meter	Autosteer sensor	N.A.
Header lateral tilt	N.A.	Header height control sensors	V
Header speed gearbox shifting	V	Cutting knives	★★★★★
Drum bearings	V	Cleaners	V
Drums	V	Drum cleaners / scrapers	V
Knife discs	V	Drive shaft	V
Drive line couplers	V	Drive chains and belts	N.A.
Crop dividers	V	Oil levels	V
Down corn augers	N.A.	Ground skid plates	V
Fold cilinders	V	Hydraulic hoses/lines	V
Transport accident prevention	N.A.	Support wheel(s)	N.A.
Support legs	V	Feeder auger	N.A.
Feeder auger bearings	N.A.	Wearplates	V

5) Operational test

Main drive

Main clutch	★★★★☆	Main drive belt	★★★★☆
Main belt tensioner bearings	V		

6) Recommended Repairs

Brake light switch replacement FR780
Cooling fan drive belt Before 5923sn replacement
Cursor 13 air filters (84386403+84530498)

End drive oil service
FPT FFPXL 15.9l oil change
Kemper 375 knife and cleaner replacement
Kernel processor belt 87545651 replacement
Kernel Processor drive idler roller bearing replacement
Kernel processor rolls replacement chromed
Left hand front end drive shaft seal replacement
Rear window replacement
Replace shearbar corn
Sensor replacement rear kp roller FR780
Smooth roller right hand inner bearing replacement
Spout 2e side liner LH HD version replacement
Spout 780 rear sideliner LH replacement
Spout middle liner with nir sensor replacement
Upper rear feedroller left hand bearing
Upper rear feedroller right hand bearing
Upper rear feedrolls arm bump stops replacement LH
Wear strips replacement
Weld in new corn cave side liners
Welding
Welding 2 hours
Welding hydraulic tank
Wiper replacement LH side
Wiper replacement RH side
750SFI/kemper 300plus main gearbox lid replacement
AC belt replacement FR9000
Bearing replacement RH
Blower side liners replacement

7) A&M PREMIUM Warranty

All our equipment is inspected with the Harvester-Guard (R) inspection software. This certificate declares that this forage harvester has A&M PREMIUM warranty on:

1. All inspected CROP-FLOW components with a 3, 4 or 5 star rating.
2. All CROP-FLOW bearings which have status approved.

Warranty on repairs:

Components with 1 or 2 star rating are subject for repair and have no warranty. In case A&M Machinery is ordered to repair the 1 and 2 stars components then warranty is in place, as repair implies upgrade to 5 stars or status approved.

Eventually repairs are reported in the 'A&M PREMIUM or A&M EXCLUSIVE warranty certificate & terms' document.