

AM Machinery inspection certificate

Pro-Siler 1000

#7221000



€2.975,00



AMMACHINERY

Industriestraat 23
5961 PH Horst
The Netherlands
T + 31 (0)77 - 2066603
sales@ammachinery.nl
<https://www.ammachinery.nl/>



Dear sir/madame,

Thank you for your interest in our **Pro-Siler 1000** built in ,with our internal stock number **7221000**.We are a dedicated SPFH specialist, we work professional and transparent, all our equipment is cleaned and run trough our 300 points inspection report. Use this link to get below information:

<https://www.ammachinery.nl/pro-siler-1000.html>

Download date: 4/26/24

Technical specifications

Partnumber

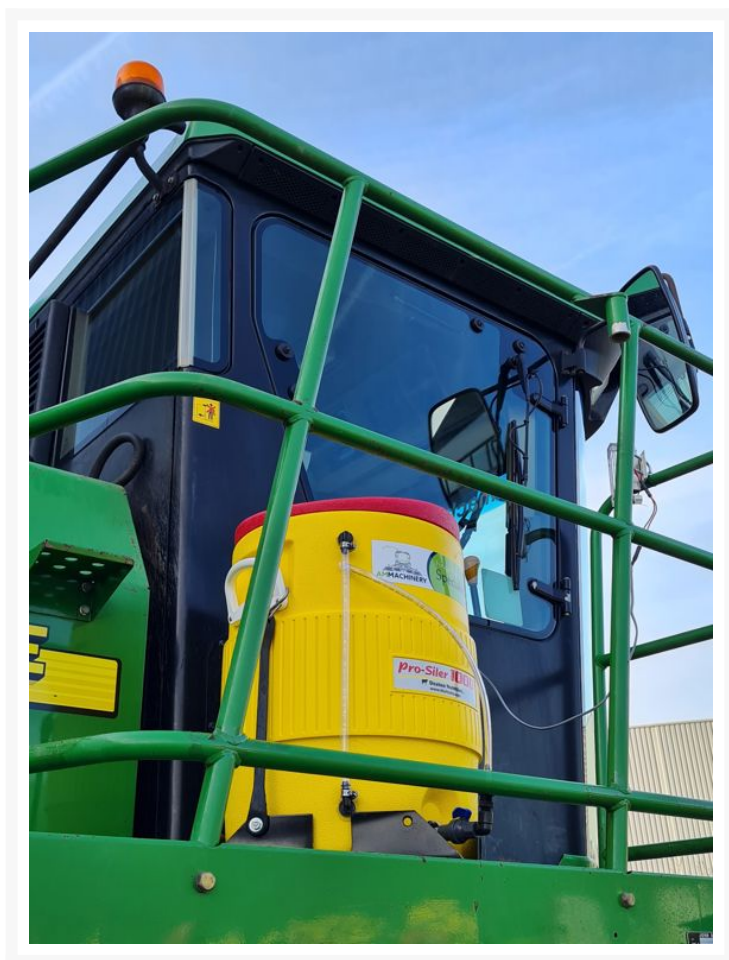
7221000

Options

2) Short Description

Universal Inoculant Applicator, Pro-Siler 1000, including dosing valve, pump and sight gauge, simple to install on every John Deere, Claas, New Holland and Krone self-propelled forage harvester. 1 fill of 38 liters treats 1000 ton silage. Comes with complete installation kit, 30 minutes to install, simple, easy and effective. Delivery worldwide, ask for our conditions and call our Sales Manager Etienne Haanen on +3177 206 6603. www.ammachinery.nl

3) Product Images





4) A&M PREMIUM Warranty

All our equipment is inspected with the Harvester-Guard (R) inspection software. This certificate declares that this forage harvester has A&M PREMIUM warranty on:

1. All inspected CROP-FLOW components with a 3, 4 or 5 star rating.
2. All CROP-FLOW bearings which have status approved.

Warranty on repairs:

Components with 1 or 2 star rating are subject for repair and have no warranty. In case A&M Machinery is ordered to repair the 1 and 2 stars components then warranty is in place, as repair implies upgrade to 5 stars or status approved.

Eventually repairs are reported in the "A&M PREMIUM or A&M EXCLUSIVE warranty certificate & terms" document.