

AM Machinery inspection certificate

# Kemper 360

#23164



Price on request



**AMMACHINERY**

Industriestraat 23  
5961 PH Horst  
The Netherlands  
T + 31 (0)77 - 2066603  
sales@ammachinery.nl  
<https://www.ammachinery.nl/>



Dear sir/madame,

Thank you for your interest in our **Kemper 360** built in **2006**, with our internal stock number **23164**. We are a dedicated SPFH specialist, we work professional and transparent, all our equipment is cleaned and run through our 300 points inspection report. Use this link to get below information:

<https://www.ammachinery.nl/kemper-360-23164.html>

### Technical specifications

Partnumber	23164	Brand	Kemper
Model	360	Year of manufacture	2006
Series	Claas		

### Options

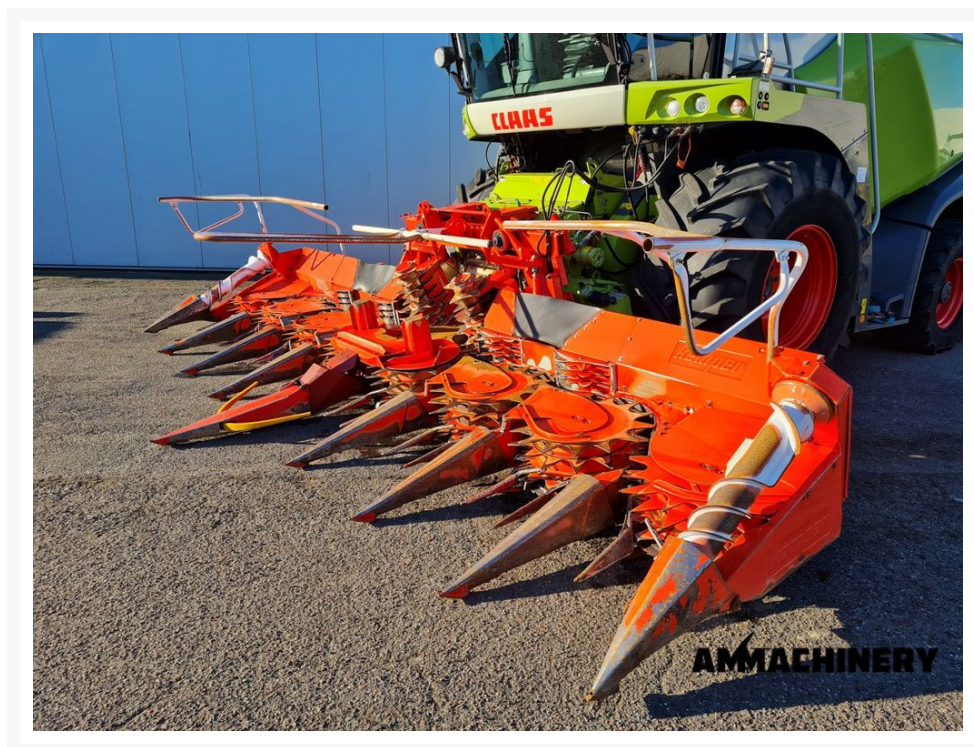
## 2) Short Description

---

For sale 2006 Kemper 360 fits Claas 8 row corn header. With autosteer sensor and header lateral tilt. This header has been inspected. The inspection report can be downloaded from our website.

## 3) Product Images

---





## 4) Inspection Report

---

Condition  
Header

Stocknumber	23164	Brand	Kemper
Model	360	Amount of rows	8
Working width	6 M	Autosteer sensor	V
Header lateral tilt	V	Header height control sensors	N.A.
Cutting knives	★★★★☆	Drum bearings	X*
Cleaners	V	Drums	V
Drum cleaners / scrapers	X*	Drive shaft	V
Drive line couplers	V	Drive chains and belts	X*
Crop dividers	V	Oil levels	X*
Down corn augers	X*	Ground skid plates	V
Fold cilinders	X*	Hydraulic hoses/lines	V
Transport accident prevention	N.A.	Support wheel(s)	N.A.
Support legs	V	Wearplates	V

## 5) Recommended Repairs

---

Belt replacement crop divider kemper 300 LH side  
 Belt replacement crop divider kemper 300 LH side  
 Drum and knife disc bearing replacement Kemper 300 2e left  
 Drum and knife disc bearing replacement Kemper 300 2e left  
 Drum and knife disc bearing replacement Kemper 300 4e left  
 Drum and knife disc bearing replacement Kemper 300 5e left  
 Drum and knife disc bearing replacement Kemper 300 5e left  
 Drum and knife disc bearing replacement Kemper 300 7e left  
 Drum and knife disc bearing replacement Kemper 300 7e left  
 Drum and knife disc bearing replacement Kemper 300 8e left  
 Drum and knife disc bearing replacement Kemper 300 8e left  
 Kemper 300 1e feeder roller gearbox (wing) topseal replacement  
 Kemper 300 1e feeder roller gearbox (wing) topseal replacement  
 Kemper 300 2e feeder roller gearbox (wing) topseal replacement  
 Kemper 300 2e feeder roller gearbox (wing) topseal replacement  
 Kemper 300 4e feeder roller gearbox (wing) topseal replacement  
 Kemper 300 4e feeder roller gearbox (wing) topseal replacement  
 Kemper 300/400 1e gearbox knifedisc oil leakage top and rear repair  
 Kemper 300/400 1e gearbox knifedisc oil leakage top and rear repair

Kemper 300/400 2e gearbox knifedisc oil leakage top and rear repair  
Kemper 300/400 2e gearbox knifedisc oil leakage top and rear repair  
Kemper 300/400 3e gearbox knifedisc oil leakage top and rear repair  
Kemper 300/400 3e gearbox knifedisc oil leakage top and rear repair  
Kemper 300/400 7e gearbox knifedisc oil leakage top and rear repair  
Kemper 300/400 8e gearbox knifedisc oil leakage top and rear repair  
Kemper 300/445/4500 down corn auger pully replacement LH  
Kemper 300/445/4500 down corn auger pully replacement RH  
Kemper 300/445/4500 down corn auger pully replacement RH  
Kemper 300/445/4500 down corn auger pully replacement LH  
Kemper 360 seal replacement fold cilinder RH side  
Kemper 360 seal replacement fold cilinder RH side  
Welding 2 hours