

AM Machinery inspection certificate

John Deere 9600

#23172



Price on request

AMMACHINERY EXCELLENCE PACKAGE



SOLD WITH WARRANTY

30 engine hours / 150 days on
CROP-FLOW components

500 engine hours / 2 years on
MAIN components*

*EU Only



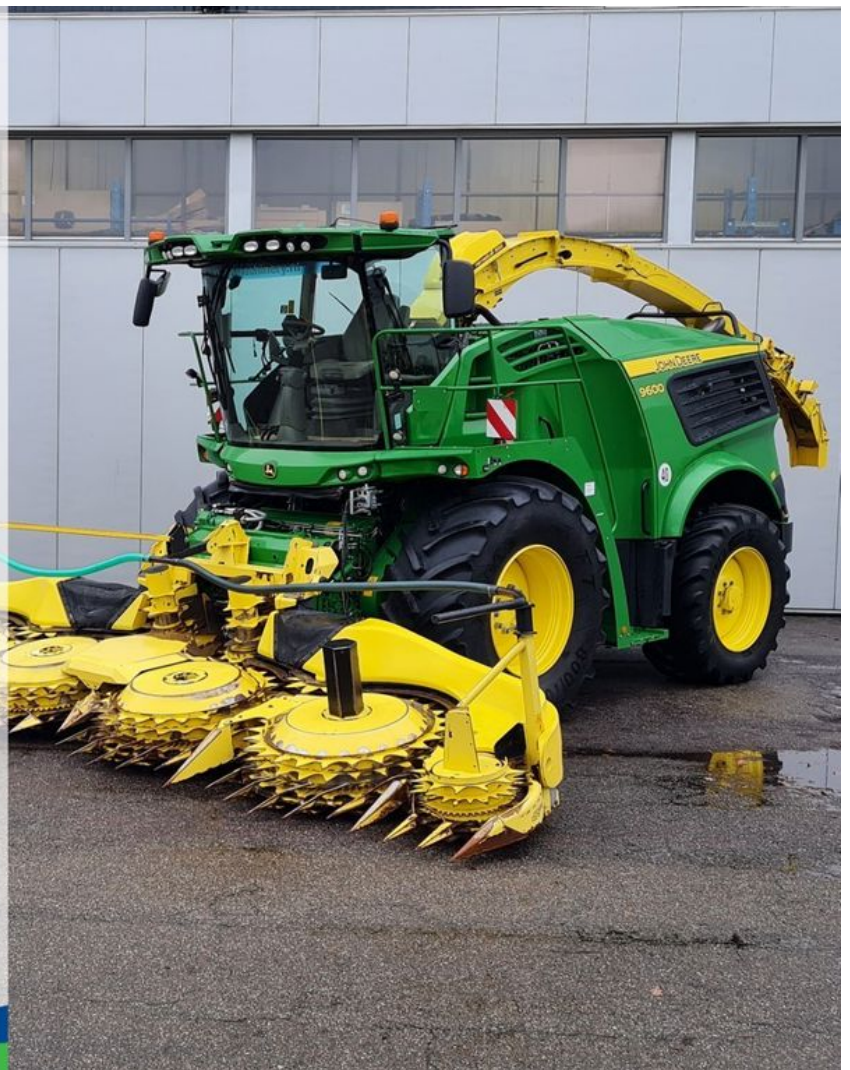
AM INSPECTION CERTIFICATE

300 point inspection
Specs & options check
Functional test



AM AFTER SALES

Financing
All-risk shipment insurance



AMMACHINERY

Industriestraat 23
5961 PH Horst
The Netherlands
T + 31 (0)77 - 2066603
sales@ammachinery.nl
<https://www.ammachinery.nl/>



Dear sir/madame,

Thank you for your interest in our **John Deere 9600** built in **2018** ,with our internal stock number **23172**.We are a dedicated SPFH specialist, we work professional and transparent, all our equipment is cleaned and run trough our 300 points inspection report. Use this link to get below information:

<https://www.ammachinery.nl/john-deere-9600.html>

Technical specifications

Partnumber	23172	Brand	John Deere
Model	9600	Year of manufacture	2018
Series	9000	Engine hours	2016
Road speed (km/h)	40	Drum hours	1364
Attr 2 or 4 wheel drive	4 WD	Engine Brand	John Deere
Engine type	L6	Engine Power HP	616
Engine Power (KW)	460	Front Tires Brand	Mitas
Rear Tires Brand	Michelin	Front Tires Size	800/70R38
Rear Tires Size	650/60R34	Front Tires profile	78
Rear Tires Profile	95	Emission Level	Tier 4 (Adblue)
Type knife drum	Standard		
Knife drum	64		
Amount of knives installed	64		
Kernel processor type	Shredlage		

Options

Auto lubrication	Yes	Rockstopper	Yes
Spout extension	Yes	Automatic spout rotation	Yes
Autofill	Yes	Spout camera	Yes
Rear view camera	Yes	Rear weights	Yes
Trailer hitch	Yes	Dumpkit	Yes
Rear hydraulics	Yes	Yield mapping	Yes
NIR sensor cabling	Yes	Greenstar ready	Yes
Autopilot module prepared	Yes	Innoculant factory installed	Yes
Climate control	Yes	Electrical adjustable mirrors	Yes
Electrical heated mirrors	Yes	Refrigurator	Yes
Side window wipers	Yes	Rear window wiper	Yes
Autocontour	Yes	Electrical KP-gap adjustment	Yes
Dumpkit	Yes	Air compressor	Yes
Heated seat	Yes	Leather seat	Yes
LED lights	Yes	Sunblinds window(s)	Yes
Operators manual	Yes	Chromed exhaust stacks	Yes
Blue-tooth phone device	Yes		

2) Short Description

For sale 2018 John Deere 9600i 4WD including Kemper 475PLUS 10 row corn header. 2016 engine hours and 1364 cutting hours, 64 knife drum, autolube, Shrrer kernel processor (corn cracker), spout camera with autofill, innoculant system factory installed and refrigurator. Very nice good working machine which is been inspected and tested. Warranty coverage for drive line and wear parts as per our warranty program. Ask for details!

3) Product Images


EXCELLENCE PACKAGE

**SOLD WITH WARRANTY**
30 engine hours / 150 days on
CROP-FLOW components

500 engine hours / 2 years on
MAIN components*
*EU Only

**AM INSPECTION CERTIFICATE**
300 point inspection
Specs & options check
Functional test

**AM AFTER SALES**
Financing
All-risk shipment insurance





4) Inspection Report

Levels

Anti-freeze level in °C	- 35 °C	Cooling liquid level	V
Engine oil level	V	Hydraulic oil level	V
Left hand front end drive oil level	V	Rear axle oil level	V
Left hand rear end drive oil level	X*	Right hand rear end drive oil level	X*
Upper feedrolls gearbox oil level	V	Gearbox oil level	V
Gearbox header drive	V	Power distribution gearbox	V

Condition

Knife drum

Type knife drum	Standard	Knife drum	64
Amount of knives installed	64	Knife condition	50%
Knife drum configuration	Corn	Shearbar front surface	★ ★ ☆ ☆ ☆
Shearbar rear surface	★ ★ ★ ☆ ☆	Shearbar active position	Rear
Left hand Knife drum bearing	V	Right hand Knife drum bearing	V
Knife drum bottom plate	★ ★ ★ ☆ ☆	Knife drum rear plate	★ ★ ★ ☆ ☆
Knife drum front cover	★ ★ ★ ☆ ☆	Knife drum stone cover	★ ★ ★ ☆ ☆
Sharpening stone	★ ☆ ☆ ☆ ☆	Left hand lift cilinder	V
Right hand lift cilinder	V		

Kernel processor

Gras chute liner	★ ★ ★ ☆ ☆	Kernel processor rolls	★ ★ ★ ☆ ☆
Kernel processor type	Shredlage	Kernel processor front roller left hand bearing	V
Kernel processor front roller right hand bearing	V	Kernel processor rear roller left hand bearing	V
Kernel processor rear roller right hand bearing	V	Kernel processor drive belt	★ ★ ★ ☆ ☆
Kernel processor drive tensioner bearings	V	Kernel processor drive idler roller	V
Kernel processor housing	★ ★ ★ ★ ☆		

Feedrolls

Upper front feedroll	★★★★☆	Upper front feedroll wear strips	★★★★☆☆
Upper rear feedroll	★★★★☆☆	Metal detector roll	★★★★☆☆
Metal detector roll wear strips	★★★★☆☆	Smooth roll	★★★★☆☆
Smooth roll scraper	★★★★☆☆	Upper front feedroller left hand bearing	V
Upper rear feedroller left hand bearing	V	Upper rear feedroller right hand bearing	V
Metal detector roll left hand bearing	V	Metal detector roll right hand bearing	V
Smooth roll left hand bearing	V	Smooth roll right hand bearing	V
Upper feedroller arm bushing	X*	Feeder housing wear plates	★★★★☆☆
Upper feedrolls drive shaft	V	Upper feedrolls tension springs	V
Upper feedrolls arm bump stops	V		

Corn cave

Corn cave liner	★★★★☆☆	Corn cave side liners	★★★★☆☆
Corn cave top liner	★★★★☆☆		

Blower

Blower paddles	95%	Blower liner	★★★★☆☆
Blower housing	V	Left hand blower bearing	V
Right hand blower bearing	V		

Transition housing

Transition housing	★★★★☆☆	Transition liners	★★★★☆☆
--------------------	--------	-------------------	--------

Spout

Spout turnable wear
shims



Spout swivel tube



Spout complete
housing



Spout front liner



Spout rear liner



Spout side liners



Spout extention



Inner Spout deflector



Outer Spout deflector



Engine

Dry engine

V

Engine belting

V

Engine belt tensioners

V

Exhaust system

V

Engine mounting

V

Airfilters

X*

Rotary air screen

V

Rotary air screen rollers

V

Cleaner cooling package

V

Engine belting idler
roller

V

Operational Test

Main drive

Main clutch



Main drive belt



Main belt tensioner
bearings

V

Header drive shaft

V

Header drive bearing

V

Drive train

Front drive shaft's and
coupler's

V

Tires condition

V

Rear axle drive shaft

N.A.

Rear axle stub axle

V

Rear axle ball joint

V

Steering cylinders

V

Operators station

Front window	V	Rear window	V
Cab door	V	Cab door latch	V
Cab right hand window	V	Cab roof	V
Cab front bottom cover	V	Mirrors	V
Joystick	V	Armrest control panel	V
Steering wheel adjustment	V	Front window wiper	V
Rear window wiper blade	V	Side window wipers blade	V
Cab air filter	X*	Seat	V
Machine body			
Front cover	V	Left hand cover	V
Right hand cover	V	Rear cover	X*
Electrical			
Head lights	V	Rear lights	V
Brake lights	V	Turn signal/hazard lights	V
Rotary beacon	V	Dome lights	V
Cab upper front work lights	V	Cab side work lights	X*
Fender work lights	V	Upper rear work lights	V
Lower rear work lights	N.A.	Spout work lights	V
Fuel gauge	V		

Functional test

Engine oil pressure low idle cold	4.1	Engine oil pressure high idle cold	5.1
Engine oil pressure low idle operating temperature	3.6	Engine oil pressure high idle operating temperature	4.9
Hydrostatic drive neutral	V	Transmission shifting	V
4WD working (if applicable)	V	Foot brakes L/R	V
Parking brake	V	Main clutch working	V
Autolube	V	Length of Cutt adjustment	V
Header speed adjustment	V	Header height control	V
Header Lateral Tilt (if applicable)	V	Front hydraulics	V
Dump valve (high flow hydraulics)	V	Spout turning	V
Metal detector	V	Spout deflector	V
Sharping system	V	Shearbar adjustment	V
Cutterhead reverser	V	Kernel processor gap adjustment	V
Airconditioning cold	V	Electrical functions cabin	V
Camera(s)	V	Radio	V
Road & Working Lights	V	Free of error codes	X*

Header

Stocknumber	22135	Brand	2009
Model	475 plus	Amount of rows	10
Working width	7500	Header lateral tilt	N.A.
Header height control sensors	X*	Header speed gearbox shifting	N.A.
Cutting knives	★★★★☆	Drum bearings	V
Cleaners	V	Knife discs	V
Drive shaft	V	Drive line couplers	V
Drive chains and belts	N.A.	Crop dividers	V
Oil levels	V	Down corn augers	N.A.
Ground skid plates	V	Fold cylinders	V
Hydraulic hoses/lines	V	Transport accident prevention	N.A.
Support wheel(s)	N.A.	Support legs	V
Feeder auger	N.A.	Feeder auger bearings	N.A.

5) Operational test

Main drive

Main clutch	★★★★☆	Main drive belt	★★★★☆
Main belt tensioner bearings	V	Header drive shaft	V
Header drive bearing	V		

6) Recommended Repairs

Airfilters replacement 8300/8400 (HXE60967 HXE60966)
 Blower paddles adjustment
 Cab air filter replacement
 Feedroll damping cylinder balljoint replacement
 Kemper 300 automatic header control sensor replacement RH
 Kemper 475plus Automatic Header Control arm replacement 8000 series

Led worklight replacement
Left hand rear end drive oil replacement
Main drive main pulley 307,5mm replacement
Recirculation Filter cab replacement
Right hand rear end drive oil replacement
Set cornheader correctly
Sharpening system chain replacement wide body
Sharpening stone replacement
Shearbar diffuser replacement
Turbo charger Engine 6135HZ021-DZ113484 oilpressure line seals replacement

7) A&M PREMIUM Warranty

All our equipment is inspected with the Harvester-Guard (R) inspection software. This certificate declares that this forage harvester has A&M PREMIUM warranty on:

1. All inspected CROP-FLOW components with a 3, 4 or 5 star rating.
2. All CROP-FLOW bearings which have status approved.

Warranty on repairs:

Components with 1 or 2 star rating are subject for repair and have no warranty. In case A&M Machinery is ordered to repair the 1 and 2 stars components then warranty is in place, as repair implies upgrade to 5 stars or status approved.

Eventually repairs are reported in the 'A&M PREMIUM or A&M EXCLUSIVE warranty certificate & terms' document.