

AM Machinery inspection certificate

# John Deere 7550

#23143



Price on request

## AMMACHINERY PREMIUM PACKAGE



### SOLD WITH WARRANTY

30 engine hours / 150 days on  
CROP-FLOW components



### AM INSPECTION CERTIFICATE

300 point inspection  
Specs & options check  
Functional test



### AM AFTER SALES

Financing  
All-risk shipment insurance

FULLY  
SERVICED  
AND  
REPAIRED



AMMACHINERY

AMMACHINERY

Industriestraat 23  
5961 PH Horst  
The Netherlands  
T + 31 (0)77 - 2066603  
sales@ammachinery.nl  
<https://www.ammachinery.nl/>



Dear sir/madame,

Thank you for your interest in our **John Deere 7550** built in **2008**, with our internal stock number **23143**. We are a dedicated SPFH specialist, we work professional and transparent, all our equipment is cleaned and run through our 300 points inspection report. Use this link to get below information:

<https://www.ammachinery.nl/john-deere-7550-23143.html>

### Technical specifications

Partnumber	23143	Brand	John Deere
Model	7550	Year of manufacture	2008
Engine hours	5173	Road speed (km/h)	30
Drum hours	3365	Attr 2 or 4 wheel drive	4 WD
Engine Brand	John Deere	Engine type	L6
Engine Power HP	595	Engine Power (KW)	458
Front Tires Brand	Good Year	Rear Tires Brand	Maxam
Front Tires Size	800/65R32	Rear Tires Size	540/65R28
Front Tires profile	69	Rear Tires Profile	71
Emission Level	Tier 3		
Type knife drum	Standard		
Knife drum	48		
Amount of knives installed	48		
Kernel processor type	Saw tooth		

### Options

Auto lubrication	Yes	Spout extension	Yes
Printer	Yes	NIR sensor cabling	Yes
Greenstar ready	Yes	Climate control	Yes
Side window wipers	Yes	Electrical KP-gap adjustment	Yes
Partly duraline wear kit	Yes	LED lights	Yes
Sunblinds window(s)	Yes		

## 2) Short Description

---

For Sale 2008 John Deere 7550 4WD including Kemper 460 8 row corn header. 5173 engine hours, 3365 drum hours. 48 knife drums, kernel processor (corn cracker), automatic lubrication, spout extension, airconditioning, Greenstar ready. This machine has been serviced and repaired based on our 300 point inspection. In addition, we provide a warranty on all our machines. For more information please send us a message.

## 3) Product Images

---

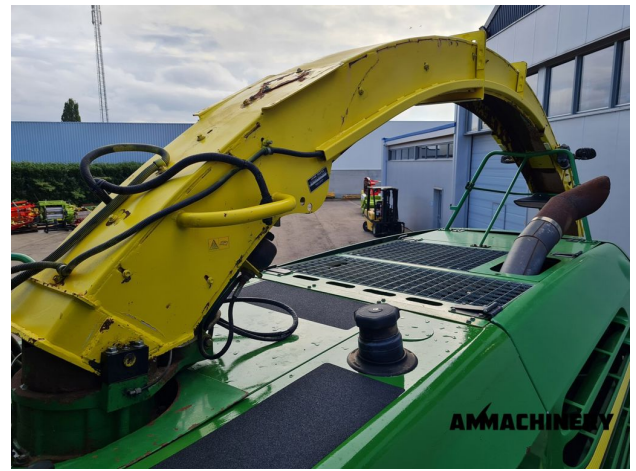
**AM MACHINERY**  
**PREMIUM PACKAGE**

**FULLY SERVICED AND REPAIRED**

- SOLD WITH WARRANTY**  
30 engine hours / 150 days on CROP-FLOW components
- AM INSPECTION CERTIFICATE**  
300 point inspection  
Specs & options check  
Functional test
- AM AFTER SALES**  
Financing  
All-risk shipment insurance

**AM MACHINERY**





## 4) Inspection Report

### Levels

Anti-freeze level in °C	- 40 °C	Cooling liquid level	V
Engine oil level	V	Hydraulic oil level	V
Left hand front end drive oil level	V	Rear axle oil level	V
Left hand rear end drive oil level	V	Right hand rear end drive oil level	V
Upper feedrolls gearbox oil level	V	Gearbox oil level	V
Brake fluid	V		

### Condition

## Knife drum

Type knife drum	Standard	Knife drum	48
Amount of knives installed	48	Knife condition	99%
Knife holders	V	Knife drum configuration	Corn
Shearbar front surface	★★★★★	Shearbar rear surface	★★★★★
Shearbar active position	Rear	Left hand Knife drum bearing	V
Right hand Knife drum bearing	V	Knife drum bottom plate	★★★★★
Knife drum rear plate	★★★☆☆	Knife drum front cover	★★★☆☆
Knife drum stone cover	★★★☆☆	Knife drum chain coupler	V
Sharpening stone	★★★☆☆	Left hand lift cilinder	V
Right hand lift cilinder	V		

## Kernal processor

Gras chute liner	★★★☆☆	Corn shute liner	★★★☆☆
Kernel processor rolls	★★★★☆	Kernel processor type	Saw tooth
Kernel processor drive belt	★★★★★	Kernel processor drive tensioner bearings	V
Kernel processor drive idler roller	V	Kernel processor belt tensioner rolls	V
Kernel processor housing	★★★★★	Wear plates	★★★★★

## Feedrolls

Upper front feedroll	★★★★☆☆	Upper front feedroll wear strips	★★★★☆☆
Upper rear feedroll	★★★★☆☆	Metal detector roll	★★★★☆☆
Smooth roll	★★★★★★	Smooth roller chain coupler	V
Smooth roll scraper	★★★★★★	Upper front feedroller left hand bearing	V
Upper rear feedroller left hand bearing	V	Upper rear feedroller right hand bearing	V
Metal detector roll left hand bearing	V	Metal detector roll right hand bearing	V
Smooth roll left hand bearing	V	Smooth roll right hand bearing	V
Upper feedroller arm bushing	V	Feeder housing wear plates	★★★★☆☆
Upper feedrolls drive shaft	V	Upper feedrolls tension springs	V
Upper feedrolls arm bump stops	V	LOC Gearbox	V
Gearbox upper feedrolls	V	Metal detector roll drive shaft	V

### Corn cave

Corn cave liner	★★★★☆☆	Corn cave top liner	★★★★☆☆
Corn cave door	★★★★☆☆		

### Blower

Blower paddles	63%	Blower liner	★★★★☆☆
Blower housing	V	Left hand blower bearing	V
Right hand blower bearing	V		

### Transition housing

Transition housing	★★★★☆☆	Transition liners	★★★★☆☆
--------------------	--------	-------------------	--------

### Spout

Spout turnable wear shims ★★★★★

Spout complete housing ★★★★★

Spout middle liner ★★★★★

Spout side liners ★★★★★

Inner Spout deflector ★★★★★

Spout swivel tube ★★★★★

Spout front liner ★★★★★

Spout rear liner ★★★★★

Spout extention ★★★★★

Outer Spout deflector ★★★★★

## Engine

Dry engine V

Engine belting V

Exhaust system V

Airfilters V

Rotary air screen rollers N.A.

Engine belting idler roller V

Rotary air screen belt V

Rotary screen fan drive belt tensioner V

Waterpump bearings V

Engine belt tensioners V

Engine mounting V

Rotary air screen V

Cleaner cooling package V

Rotary air screen tensioner roller V

Rotary screen fan drive belt V

## Operational Test

### Main drive

Main clutch ★★★★★

Main belt tensioner bearings V

Main drive belt ★★★★★

### Drive train

Front drive shaft's and coupler's V

Rear axle stub axle V

Steering cylinders V

Tires condition V

Rear axle ball joint V

## Operators station

Front window	V	Rear window	V
Cab door	V	Cab door latch	V
Cab right hand window	V	Cab roof	V
Cab front bottom cover	V	Mirrors	V
Joystick	V	Armrest control panel	V
Steering wheel adjustment	V	Front window wiper	V
Rear window wiper blade	N.A.	Side window wipers blade	V
Cab air filter	V	Seat	V

### Machine body

Front cover	V	Left hand cover	V
Right hand cover	V	Rear cover	V

### Electrical

Head lights	V	Brake lights	V
Turn signal/hazard lights	V	Rotary beacon	V
Dome lights	V	Cab upper front work lights	V
Cab side work lights	V	Fender work lights	V
Upper rear work lights	V	Lower rear work lights	N.A.
Spout work lights	V	Fuel gauge	V

### Functional test



Engine oil pressure low idle cold	3.2	Engine oil pressure high idle cold	4.1
Engine oil pressure low idle operating temperature	2.3	Engine oil pressure high idle operating temperature	3.5
Hydrostatic drive neutral	V	Transmission shifting	V
4WD working (if applicable)	V	Foot brakes L/R	V
Parking brake	V	Main clutch working	V
Autolube	V	Length of Cutt adjustment	V
Header speed adjustment	V	Header height control	V
Header Lateral Tilt (if applicable)	N.A.	Front hydraulics	V
Dump valve (high flow hydraulics)	N.A.	Spout turning	V
Metal detector	V	Spout deflector	V
Sharping system	V	Shearbar adjustment	V
Cutterhead reverser	N.A.	Kernel processor gap adjustment	V
Airconditioning cold	V	Electrical functions cabin	V
Camera(s)	N.A.	Radio	V
Road & Working Lights	V	Free of error codes	V

## Header

Stocknumber	23050	Brand	Kemper
Model	360	Amount of rows	8
Working width	6	Autosteer sensor	N.A.
Header lateral tilt	X*	Header height control sensors	N.A.
Cutting knives	★★★★☆☆	Drum bearings	V
Cleaners	V	Drums	X*
Drum cleaners / scrapers	X*	Knife discs	V
Drive shaft	V	Drive line couplers	X*
Drive chains and belts	X*	Crop dividers	X*
Oil levels	V	Down corn augers	X*
Ground skid plates	X*	Fold cylinders	V
Hydraulic hoses/lines	X*	Transport accident prevention	V
Support wheel(s)	N.A.	Support legs	X*
Feeder auger	N.A.	Feeder auger bearings	N.A.
Wearplates	X*		

## 5) Operational test

---

### Main drive

Main clutch	★★★★☆☆	Main drive belt	★★★★☆☆
Main belt tensioner bearings	V		

## 6) A&M PREMIUM Warranty

All our equipment is inspected with the Harvester-Guard (R) inspection software. This certificate declares that this forage harvester has A&M PREMIUM warranty on:

1. All inspected CROP-FLOW components with a 3, 4 or 5 star rating.
2. All CROP-FLOW bearings which have status approved.

**Warranty on repairs:**

Components with 1 or 2 star rating are subject for repair and have no warranty. In case A&M Machinery is ordered to repair the 1 and 2 stars components then warranty is in place, as repair implies upgrade to 5 stars or status approved.

Eventually repairs are reported in the 'A&M PREMIUM or A&M EXCLUSIVE warranty certificate & terms' document.